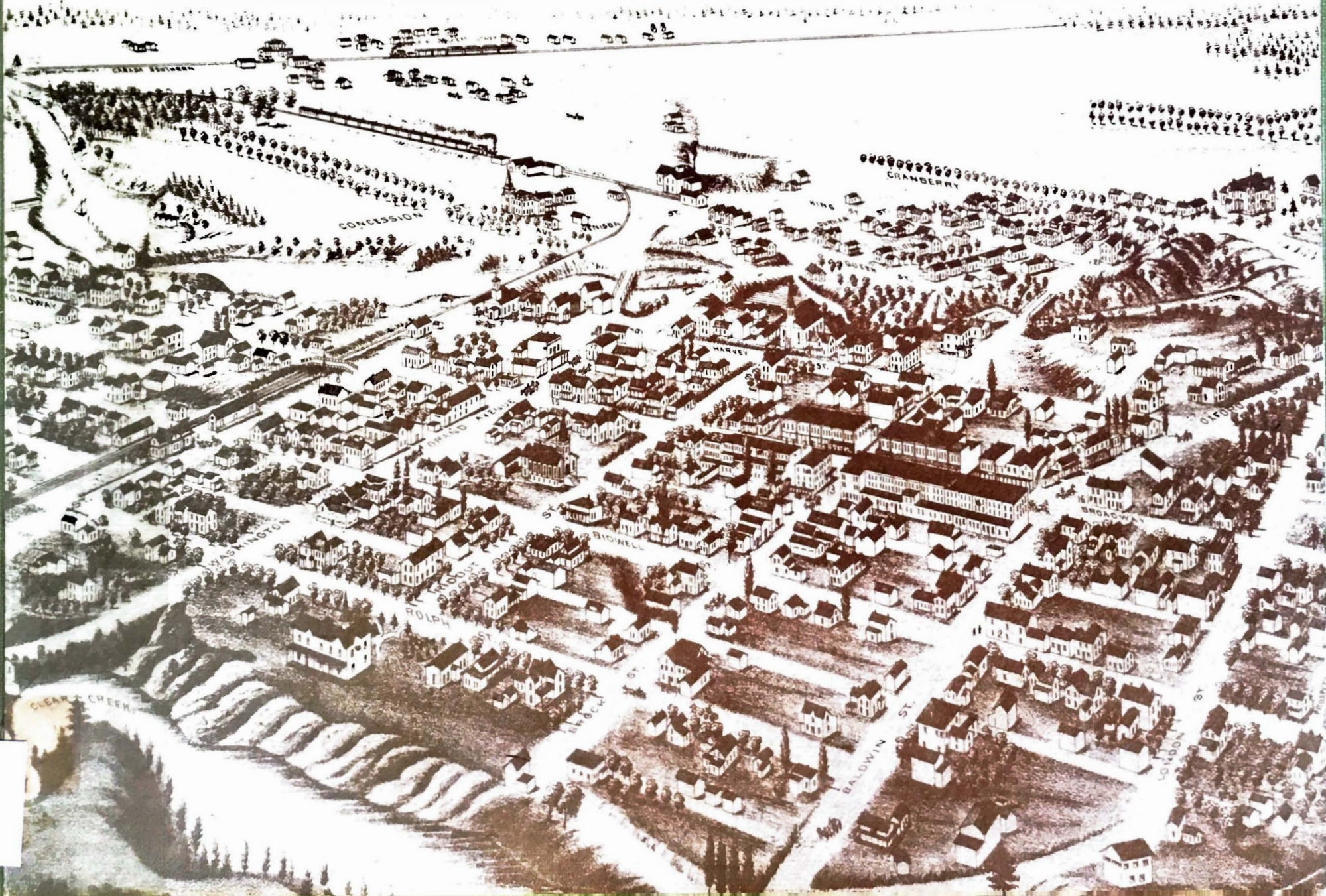




3 6497 01432960 7

TILSONBURG HERITAGE



TILSONBURG HERITAGE

TILSONBURG
PUBLIC LIBRARY

Drawings and Design by Joan Mccann



1'1.-{."^

Research and Text by Eugene Allan

This Project Was Funded by a Federal Local Initiative Program Grant

R£f£R €NCE. uS €. oN.-1

OXFORD COUNTY UBPiAh ...

WE GRATEFULLY ACKNOWLEDGE AND THANK THE
FOLLOWING PEOPLE FOR THEIR ASSISTANCE IN COMPILING THE REPORT,

MATTHEW SCHOLTZ AND THE LIBRARY STAFF FOR THE CO-OPERATION IN LOCATING
RELATIVE MATERIAL

THE HISTORICAL SOCIETY AND IN PARTICULAR DR. J. I. COOPER FOR HIS
INFORMATIVE ESSAYS.

A.J. OF LONDON FOR HIS CHECKING THE ARCHITECTURAL ACCOUNTS.

MR. AND MRS. RUSSELL JACKSON FOR THEIR DETAILED DATA.

AND A SPECIAL THANKS TO THOSE WHO TOOK THE TIME TO TALK WITH US AND
ALLOWED US TO VIEW THEIR HOMES.

INTRODUCTION

THIS REPORT HAS BEEN COMPILED TO RECORD THE OLDER STRUCTURES OF THE TOWN, ALL OF THEM INCLUDED, WITH ONE EXCEPTION, WEPE CONSTRUCTED BEFORE 1902 WHEN THE SPELLING OF TILSONBIURG, WITH TWO L'S, WAS OFFICIALLY CHANGED, IT IS ON THIS BASIS, THAT WE HAVE CHOSEN TO SPELL OUR TITLE USING THE SPELLING UNDER WHICH THESE STRUCTURES WERE BUILT,

VERGE EORDS HAVE BEEN ILLUSTRATED THROUGHOUT THE BOOK TO HIGHLIGHT THE CHANGES AND THE VARIATIONS OF THESE DECORATIVE ELEMENTS.

THE SELECTION OF CENTENNIAL HOMES, HAS MADE FROM THOSE STRUCTURES WHICH HAD REACHED THEIR 100TH YEAR BY THE CENTENNIAL OF THE TOWN IN 1972, THIS WAS DONE SO THAT A BETTER UNDERSTANDING OF OUR PAST AND WHERE THE TOWN'S ARCHITECTURE WAS IN DEVELOPMENT AT THIS IMPORTANT TIME,

THE STRUCTURES HAVE BEEN LISTED IN A DEFINITE SERIES, SO THAT THIS BOOK MAY BE USED AS A TOUR MANUAL. BY FOLLOWING THE MAP ONE CAN VISIT ALL THE STRUCTURES MENTIONED HERE AND HOPEFULLY WILL TAKE IN MUCH MORE, IT IS IMPOSSIBLE TO INCLUDE EVERY STRUCTURE BUT WE ARE CONFIDENT THAT OUR SELECTION IS A GOOD CROSS SECTION OF THE STRUCTURES WHICH MAKE UP TILSONBIURG'S HERITAGE.

GLOSSARY

- ARCHITRAVE - IN ARCHITECTURE THE PART WHICH RESTS IMMEDIATELY ON THE COLUMN
- DRIPSTONE - A PROJECTING MOLDING OVER DOORWAYS ETC. TO THROW OFF THE RAIN
- FACE - THE FRONT SURFACE OF A STRUCTURE
- FINIALS - AN ORNAMENT AT THE TOP OF A SPIRE OR TOWER
- GABLE - TRIANGULAR AREA FORMED BY THE SLOPE OF THE ROOF
- IONIC - A GREEK STYLE OF ARCHITECTURE
- LANCET - TALL NARROW POINTED ARCHED WINDOW
- LESENE - SLIGHTLY PROJECTING COLUMN WITH A BASE OR CAPITAL
- MANSARD - A ROOF WITH TWO SLOPES TO ALL FOUR SIDES THE LOWER ONE BEING MUCH STEEPER IN SLOPE.
- MOTIF - A REPEATED FIGURE IN A DESIGN
- ORIEL WINDOW - A BAY WINDOW WHICH PROJECTS FROM THE SECOND STOREY
- PILASTERS - A RECTANGULAR SUPPORT TREATED ARCHITECTURALLY AS A COLUMN WITH A BASE
- PEDIMENT - A LOW TRIANGULAR MASS RESTING ON A GARTE
- PORTICO - A LARGE PORCH HAVING A ROOF OFTEN WITH A PEDIMENT SUPPORTED BY COLUMNS
- QUOIN - AN OUTSIDE CORNER OF A BUILDING OR ONE OF STONES FORMING THE CORNER
- QUADRIFOIL - F. FOUR LOBED ORNAMENTATION
- RUSTICATED - TO TAKE OR FINISH IN MASONRY RUSTIC STYLE OR ROUGH FINISH
- SIDELIGHTS - AN OPENING AT THE SIDE OF A DOOR GLAZED AREA
- TOSCANA - STYLE OF PILLARS VOID OF DECORATION
- VERGEBORDS - AN ORNATE BOARD ALONG A GABLED ROOF
- VOUSSOIRS - BRICKS IN AN ARCH /HOLLOW OPENING

BIBLIOGRAPHY

ADASON₁ ANTHONY, WILU'IPD, JOHN, THE GAITY nf GAELES,
TORONTO; cCLELLAm AND STEWART LH1ITEn₁ 1974/

ADAMSmL ANTHONY, f.ACRAC :ARION, THE ANCESTRAL ROOF
TORONTO: CLARKC IRWIN /LMD cor APMY Ur,JITFn₁ 1963,

AIDALA₁ THCI"1AS1 BRIICE1 CURT, THE GR.F.AT HnUSES OF SAN FRANCISCO
TORONTO: P.A mor HOUSE OF CANADA₁ 1474,

GREENHILL RALPH₁ 1ACPHERSO L KPt RICHARDSON1 DOUGLAS,
ONTARIO TOWMS, TORONTO: OBERSOtl PRESS1 1974,

HONEY₁ TERRENCE, LONDON HERITAr,E
LONDON: LOMDON FREE PRESS PRINTIMG CO"PA"iY. 1972,

MAASS₁ JOHN. THE_GINf,FRB,OEAD_ArjE
TORONTO: P.IMHi.L\RT AND Cori"PMiY, H!CORPORATED1 19 7,

WHIFFEN₁ f!ARCIIS, AMERICAN_AP,CHITECTIIRE_SINCE_1780.
CAMBRIDGE: f!ASSACHIISETTS IMSTITIITE OF TE:CHNOLOGY PRESS, 1%9,

